

25.02.21

WALT: Understand continuous data in line graphs and tables

Vocabulary check

discrete data

continuous data

title

label

bar chart

axis/axes

scale

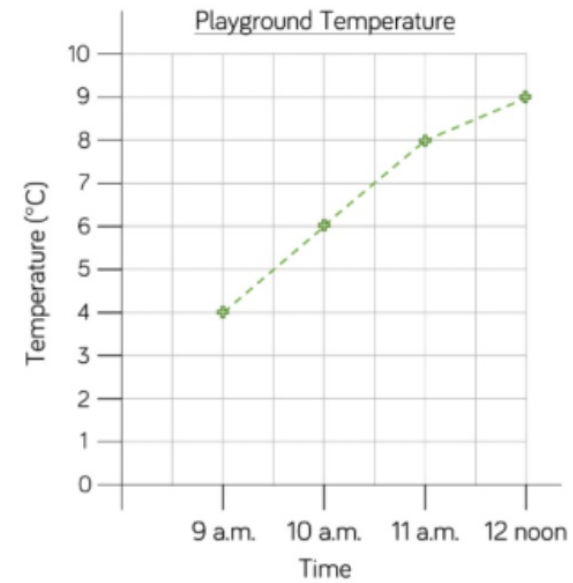
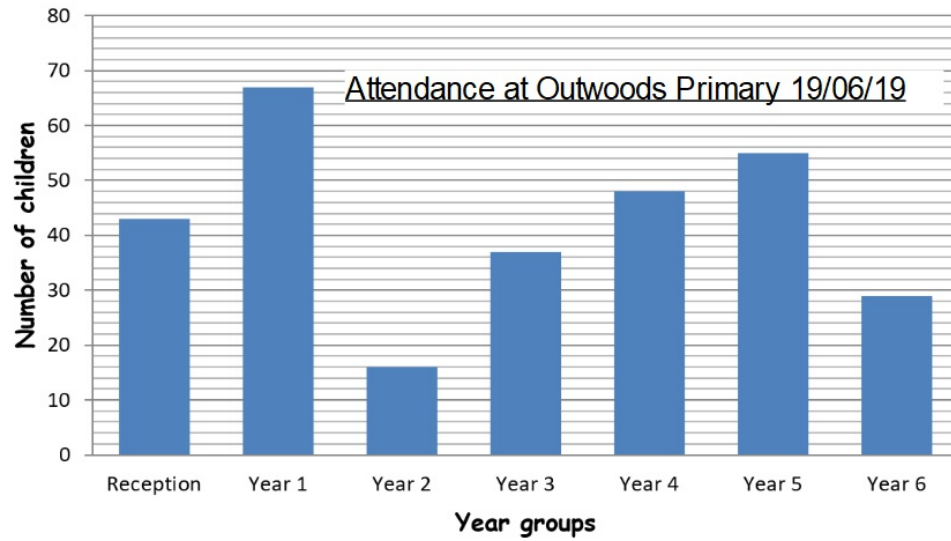
interval

value

measure

units

Compare these two forms of data.  
What is the same? What is different?

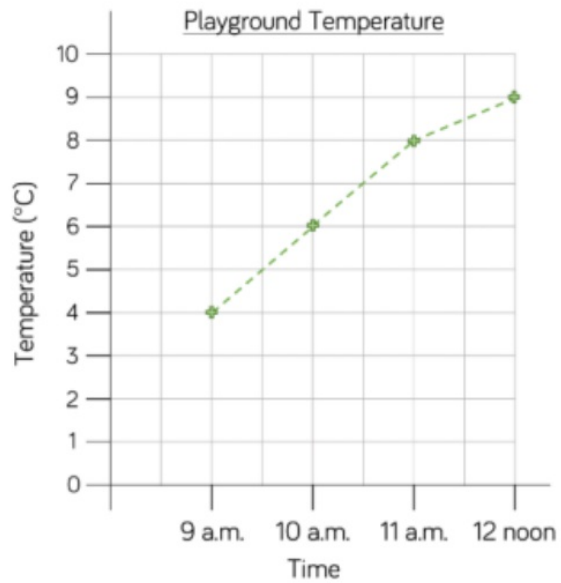


Compare these two forms of data.  
What is the same? What is different?

Attraction	Number of visitors on Saturday	Number of visitors on Sunday
Animal World Zoo	1,282	2,564
Maltings Castle	2,045	1,820
Primrose Park	1,952	1,325
Film Land Cinema	2,054	1,595

The table shows the height of the plant each week.

Week 1	Week 2	Week 3	Week 4	Week 5	Week 6
4 cm	7 cm	9 cm	12 cm	14 cm	17 cm



The table shows the height of the plant each week.

Week 1	Week 2	Week 3	Week 4	Week 5	Week 6
4 cm	7 cm	9 cm	12 cm	14 cm	17 cm

How did this data end up in the line graph and the table?  
Why?



Key points  
Measurements taken and recorded  
Using measuring instruments

The table shows the height of the plant each week.

Week 1	Week 2	Week 3	Week 4	Week 5	Week 6
4 cm	7 cm	9 cm	12 cm	14 cm	17 cm

What questions can we answer using this table?

What questions can we not answer?

Explain each answer you give.

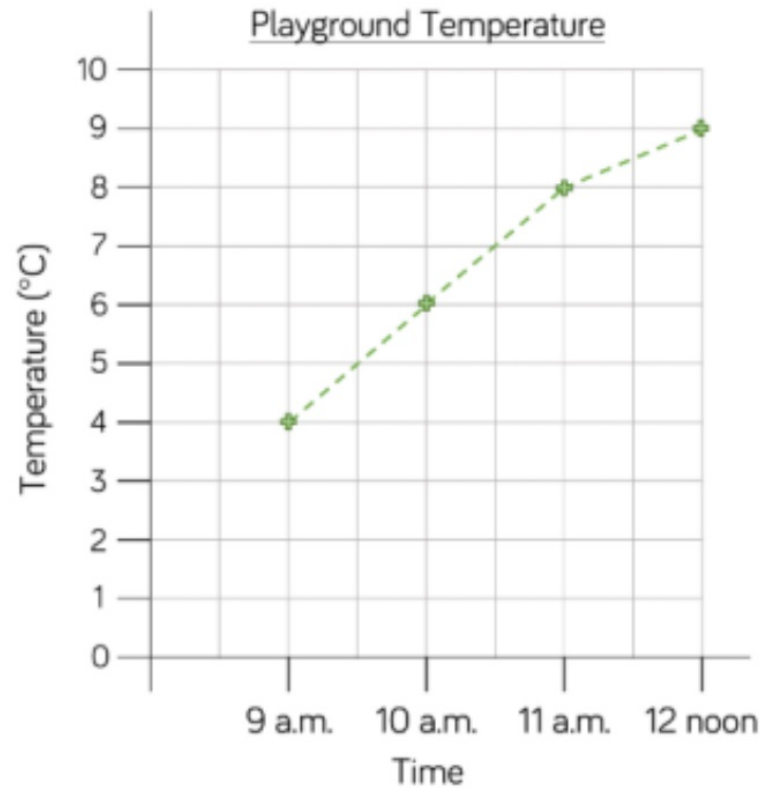
*e.g.*

*The height of the plant in Week 2 was?*

*When was the plant was 14cm tall?*

*Between which weeks did the plant grow past 10cm?*

*During which weeks did the plant grow the slowest?*



What questions can we answer using this line graph?

What questions can we not answer?

Explain each answer you give.

e.g.

The temperature at 9 a.m. was?

The time when it was warmest?

Put into table.

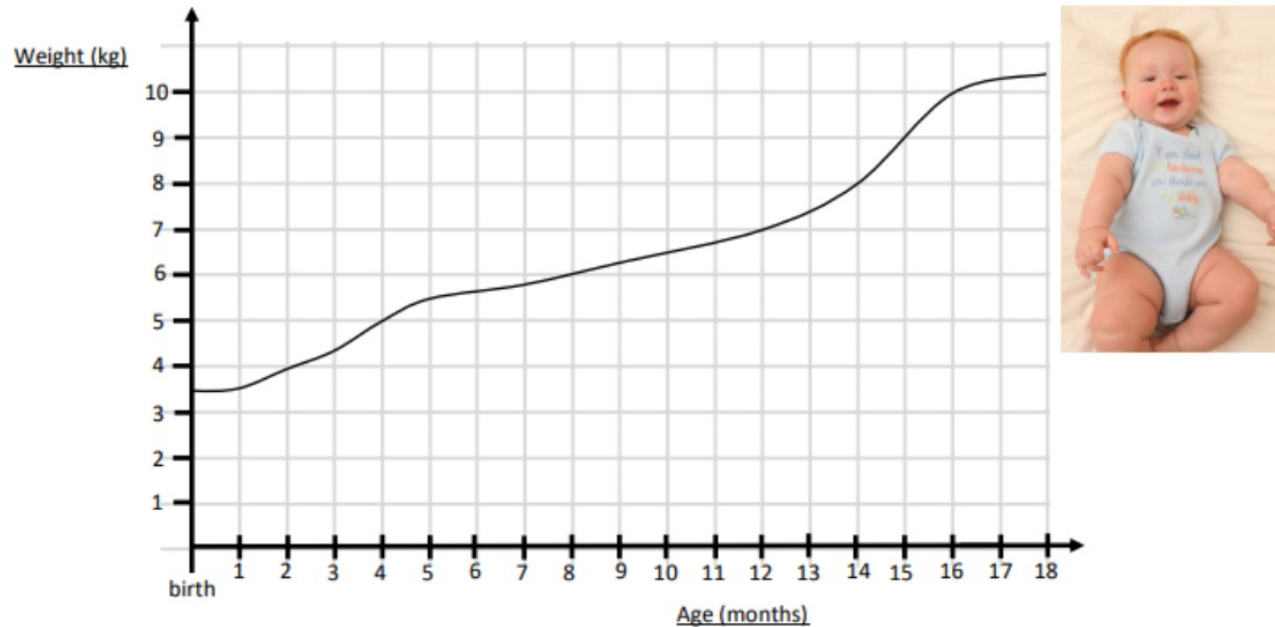
How would you **estimate** the temperature at 9:30?

How would you **estimate** the time when the temperature was 7 degrees Celsius?

Which is easier to estimate from? Table or line graph?

## Try It

This graph shows how the weight of a baby changes over 18 months.



How old was the baby when she weighed 10kg?

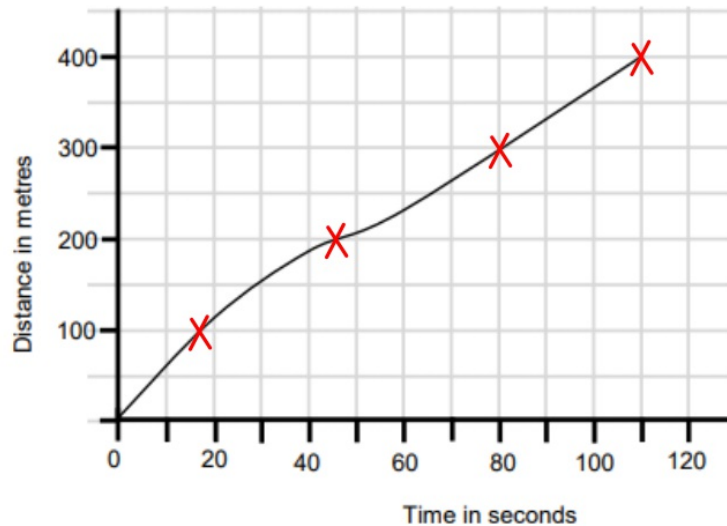
How heavy was the baby when she was born?

How much did the baby weigh on her first birthday?

## Use It

Create a table to show how the data from this line graph might have been recorded.

This graph shows how long it took Adam to run a 400m race.



Who do you think recorded this information?

Why might they have done this?

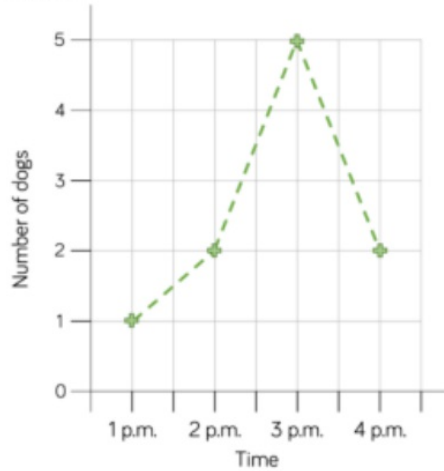
Explain your answers.

Write some questions that can be answered from the line graph or the table.



# Prove It

1. Tommy created a line graph to show the number of dogs walking in the park one afternoon.



Tommy says,



At half past one there are 1.5 dogs in the park.

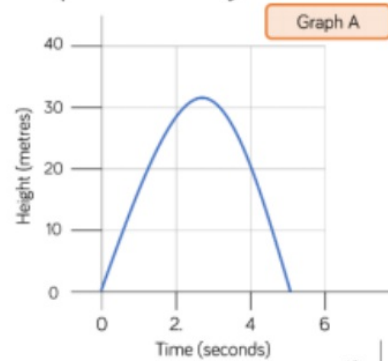
Why is Tommy incorrect?

What would be a better way of presenting this data?

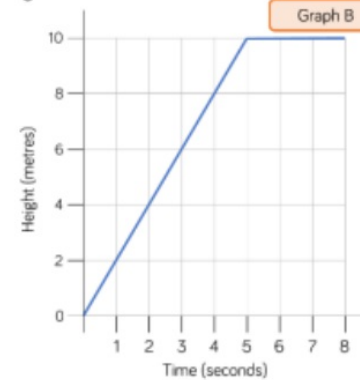
2. Jack launched a toy rocket into the sky. After 5 seconds the rocket fell to the ground.

Which graph shows this?

Explain how you know.



Graph A



Graph B

Make up your own story for the other graph.