

23.02.21

WALT: Solving problems using bar charts

Vocabulary check

discrete data

title

label

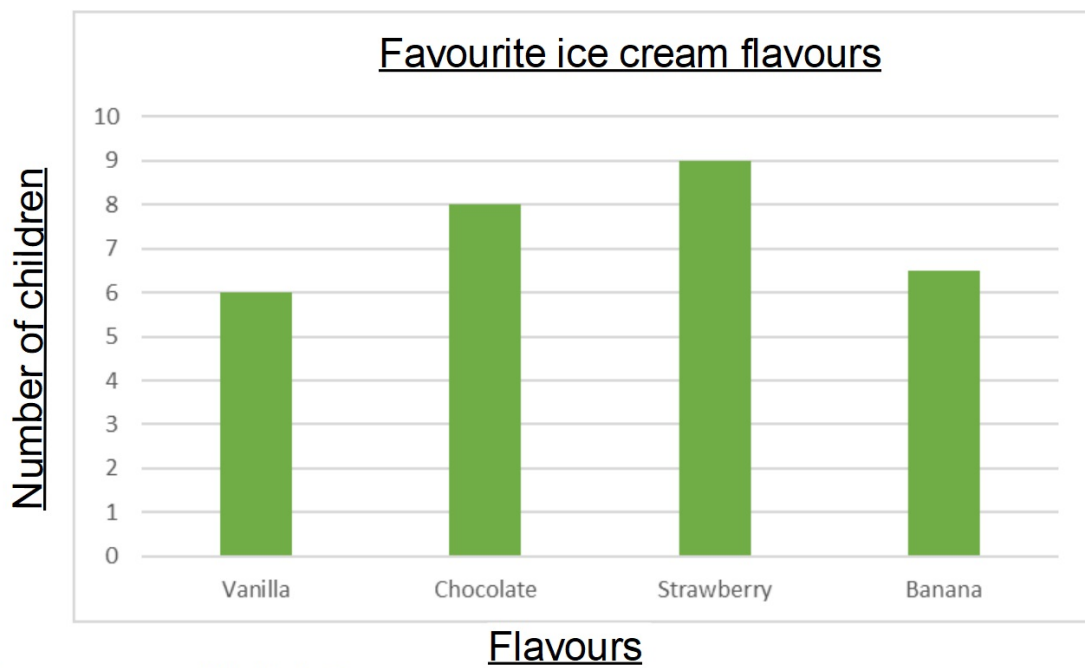
bar chart

axis/axes

scale

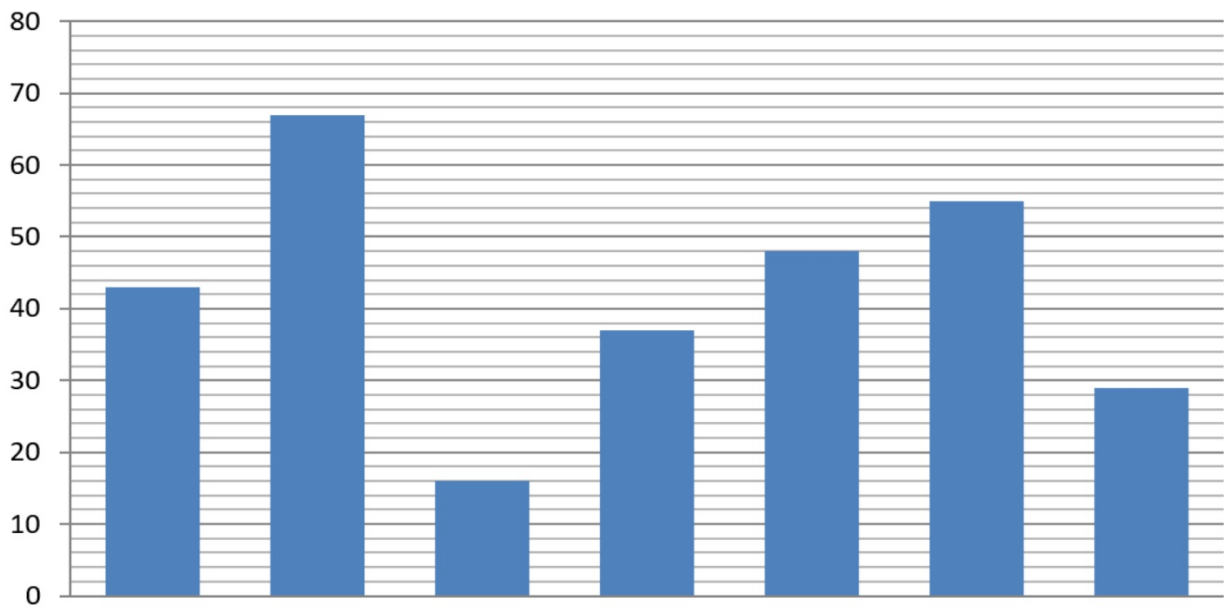
interval

value

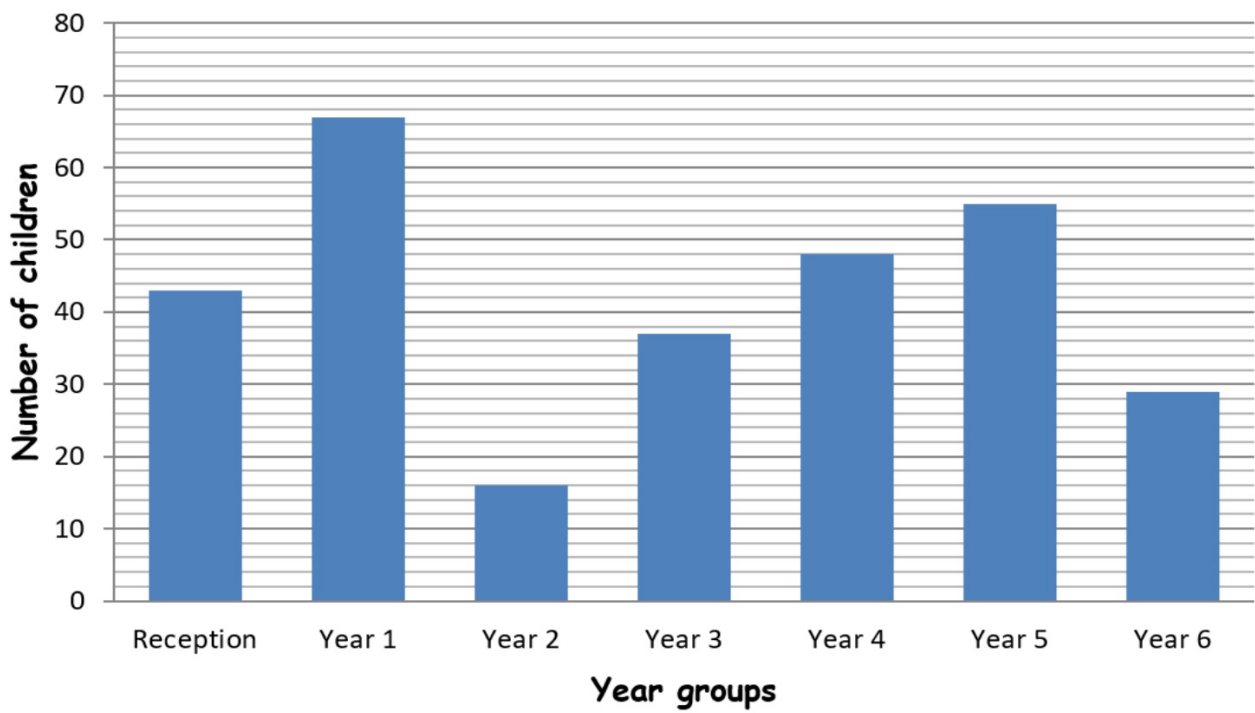


**What is wrong with this?**

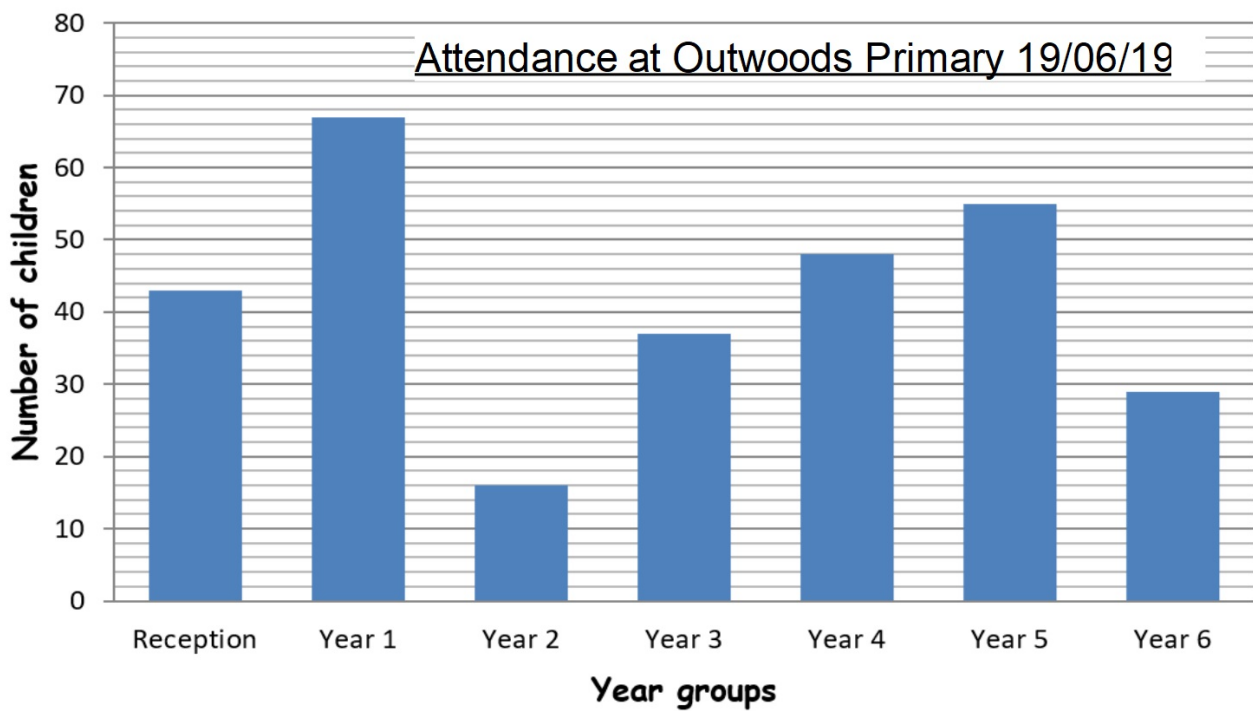




What different things can you say about this data?



Now what can we say about this data?

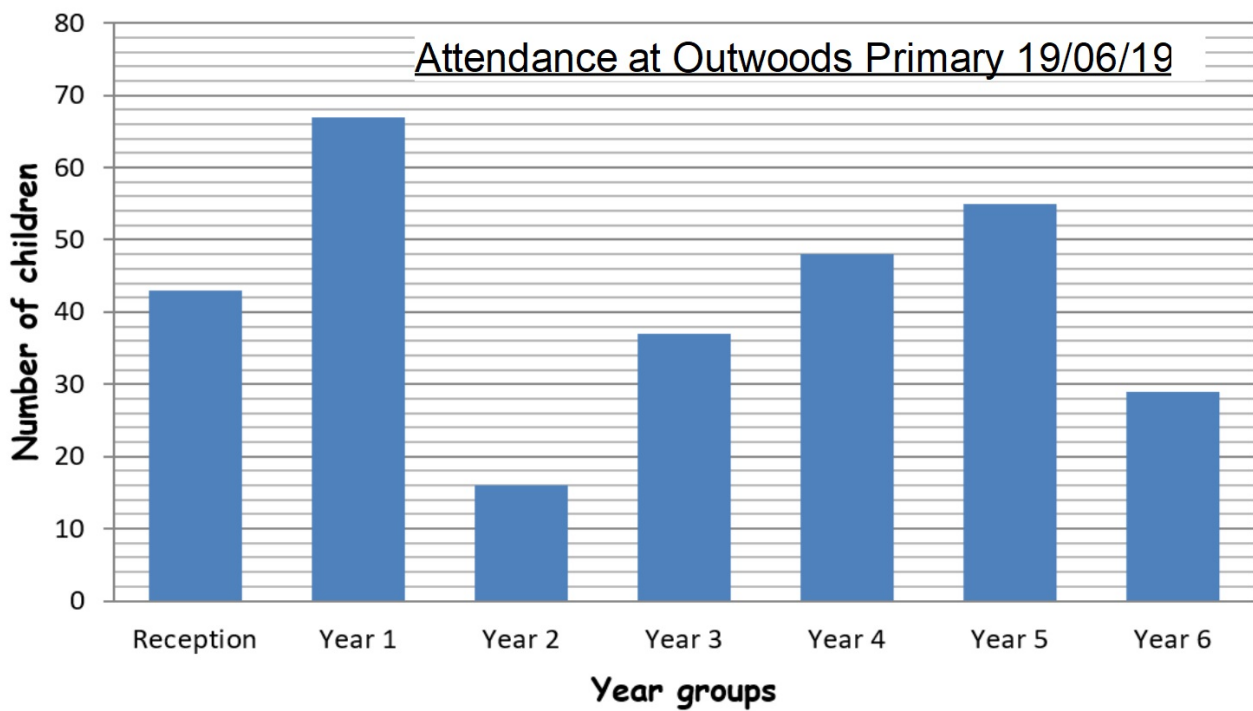


What is this bar chart telling us?

What questions can we answer?

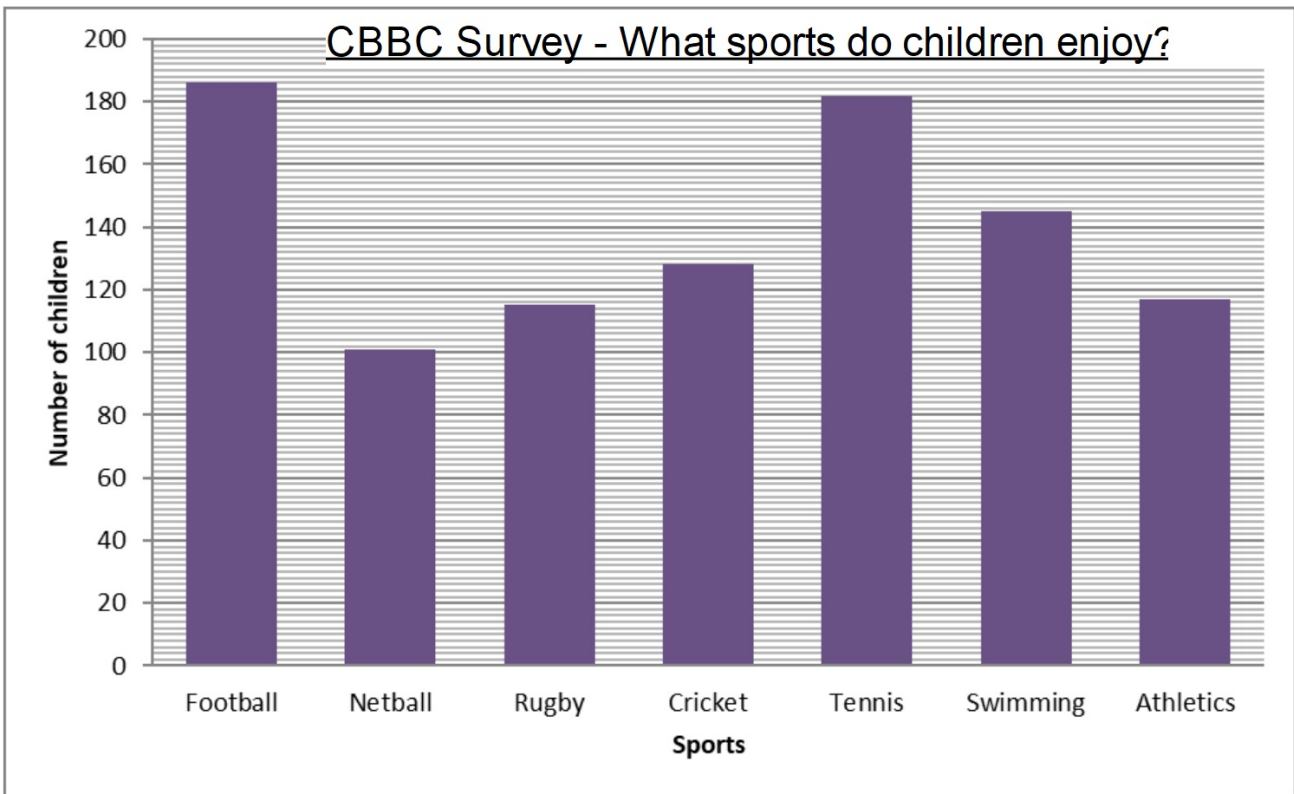
What questions can we not answer?

How might this data have been collected?



**Most likely wrong answer?**

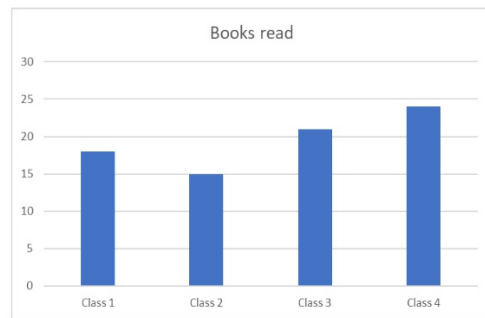
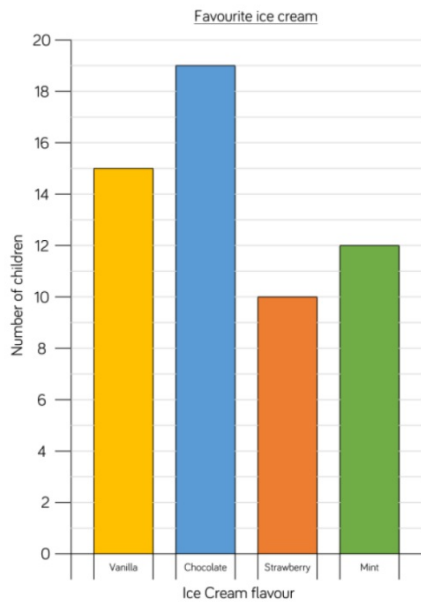
How many more children attended in Year 5 than Year 4?



**Most likely wrong answer?**

Which sport is enjoyed by most children?

Two horizontal bars with black outlines and orange fill. The top bar is longer than the bottom bar.



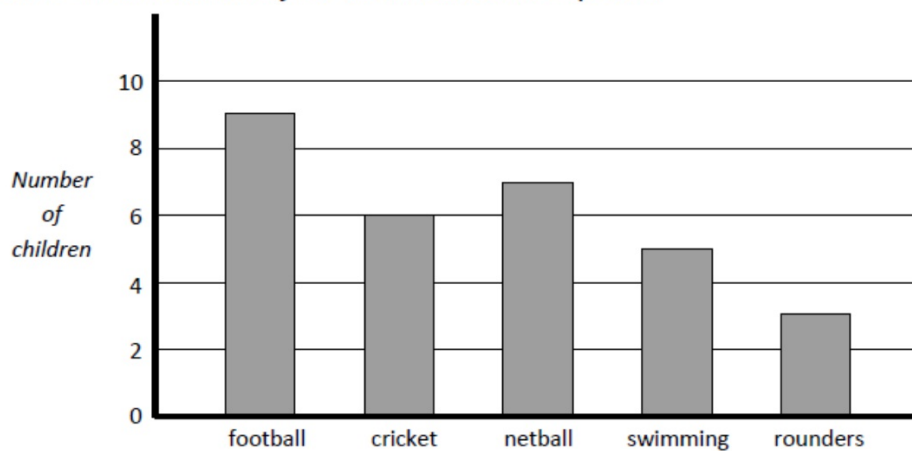
How did this data end up in these bar charts and pictograms?  
Why?





## Try It

Class 4 did a survey of their favourite sports.



How many children voted for football?

How many more votes did netball get than rounders?

Skye said, "My two favourite sports got 11 votes altogether."  
Which are Skye's two favourite sports?

## **Use It**

Think about questions that you would like to know about children in Year 5 that can be answered by collecting discrete data.

- Write down three questions
- Choose the one you are most interested in answering.
- Explain what information you would need to collect to answer your question.
- Explain how you could collect and record the information.

## Prove It

Attraction	Number of visitors on Saturday	Number of visitors on Sunday
Animal World Zoo	1,282	2,564
Maltings Castle	2,045	1,820
Primrose Park	1,952	1,325
Film Land Cinema	2,054	1,595

True or false?

- The same number of people visited Maltings Castle as Film Land Cinema on Saturday.
- Double the number of people visited Animal World Zoo on Sunday than Saturday.
- The least popular attraction of the weekend was Primrose Park.